

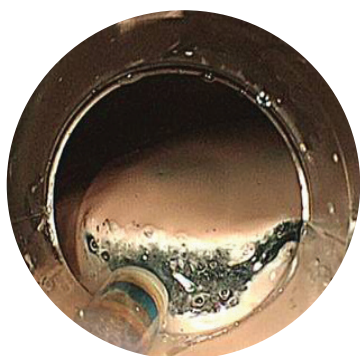
Training model for ESD and POEM procedure that replicates the texture of organs.

Facilitates Mucosal marking, Submucosal injection, Submucosal incision, Submucosal dissection, Muscle layer incision and Clipping.

Compatible with endoscopic devices, ESD/PEOM devices and high-frequency apparatus with the same characteristics and setting as in a clinical setting.

Connects to diathermy machine with conventional pad.

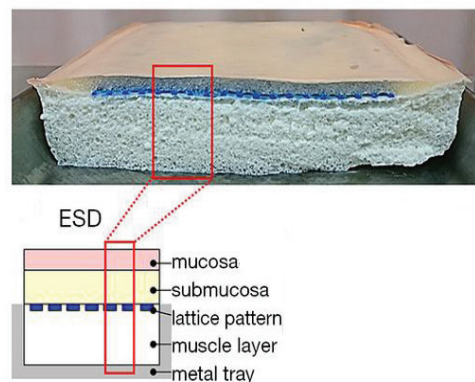
No infection risk due to non-biological material construction.



Submucosal Incision



Forming a tunnel (POEM)



Order Code	Description	Working Area	Unit
SAENDOGE TM L	Sunarrow EndoGel TM ESD Training Model	125 x 75mm	Individual



Contact C.R. Kennedy for more information:

VIC 03 9823 1812 | **NSW** 02 9552 8341 | **QLD** 07 3632 6717 | **SA** 08 8410 8105 | **WA** 08 9489 8544
medicalcustomerservice@crkennedy.com.au | crkennedy.com.au