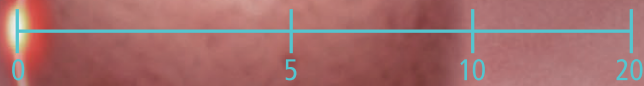


SCALE EYE

A virtual scale for size estimation support*1



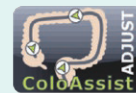


FUJIFILM's Full Support For Colonoscopy

EC-760S-A³ aims to cover clinical needs
in colonoscopy from screening to therapy.

Insertion

- Flexibility Adjustment
- Adaptive Bending
- Advanced Force Transmission



In-vivo

SCALE EYE

For Your Daily Examinations

Lesion size is considered important information when deciding on therapeutic strategies within the colon e.g. Resect and Discard, EMR, ESD. However, it is not always easy to estimate lesion size in the endoscopic field of view. FUJIFILM has developed SCALE EYE^{*2}, a function designed to aid endoscopists in estimating the size of lesions in the colon. By simple operation of the endoscope switch, SCALE EYE is activated and supports to determine the size of the lesion within the endoscopic field of view.

*2 More detailed information of SCALE EYE is provided in the operation manual

Screening

- Linked Color Imaging
- 170 degrees wide field of view
- CAD EYE ^{*4}



Characterization

- Blue Light Imaging
- CAD EYE ^{*4}
- SCALE EYE



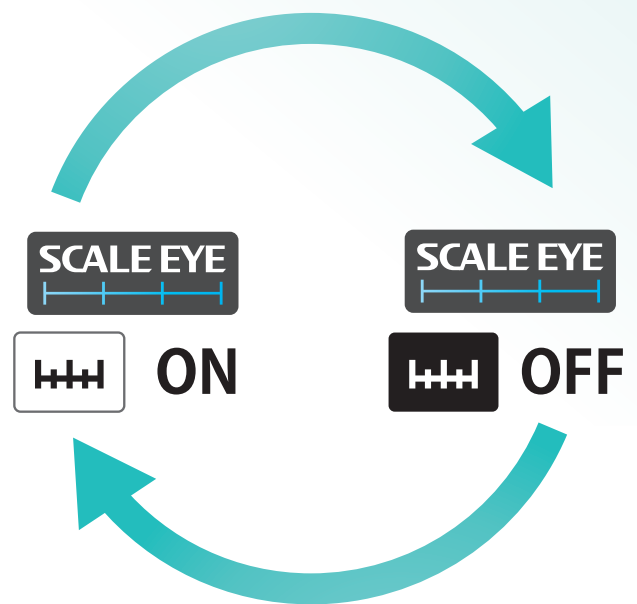
*3 EC-7605-A means to EC-7605-A/L and EC-7605-A/M.

*4 CAD EYE requires an additional software 'EW10-EC Group Software'

Easy One-Step operation

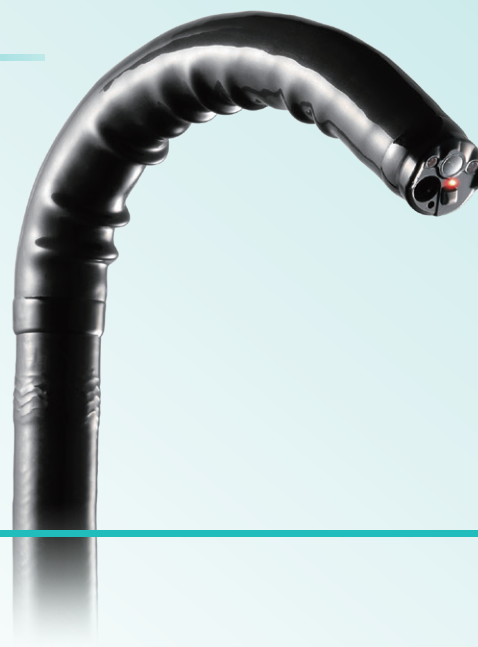


SCALE EYE can be activated or deactivated simply by pushing the endoscope switch or directly at the processor. The allocation of the endoscope switch can be set individually .



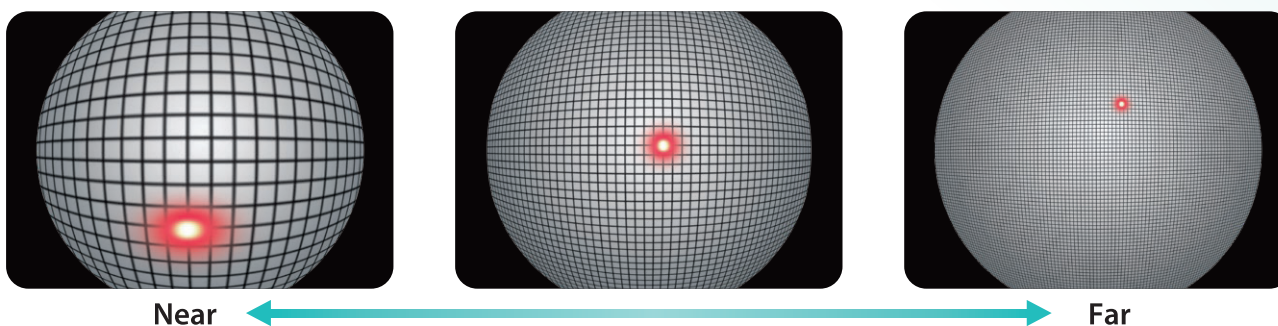
SCALE EYE

works with...



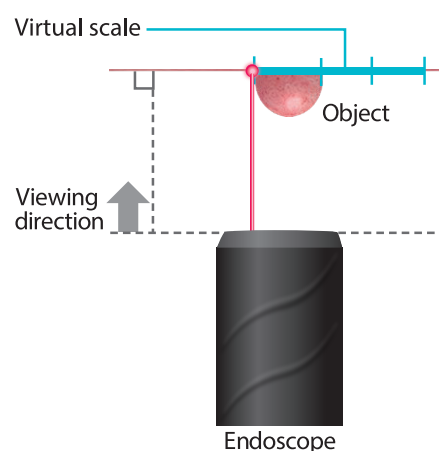
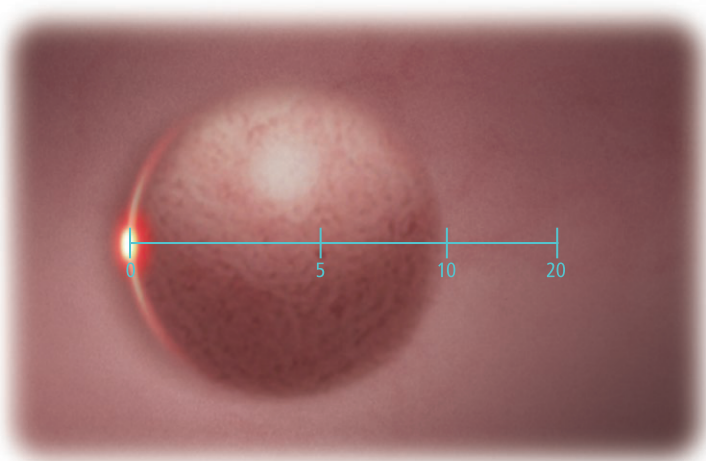
Laser-equipped endoscope

- The endoscope is equipped with a laser. The laser spot is displayed in the endoscopic image.
- The position of the laser spot changes according to the distance between the tip of endoscope and the object.

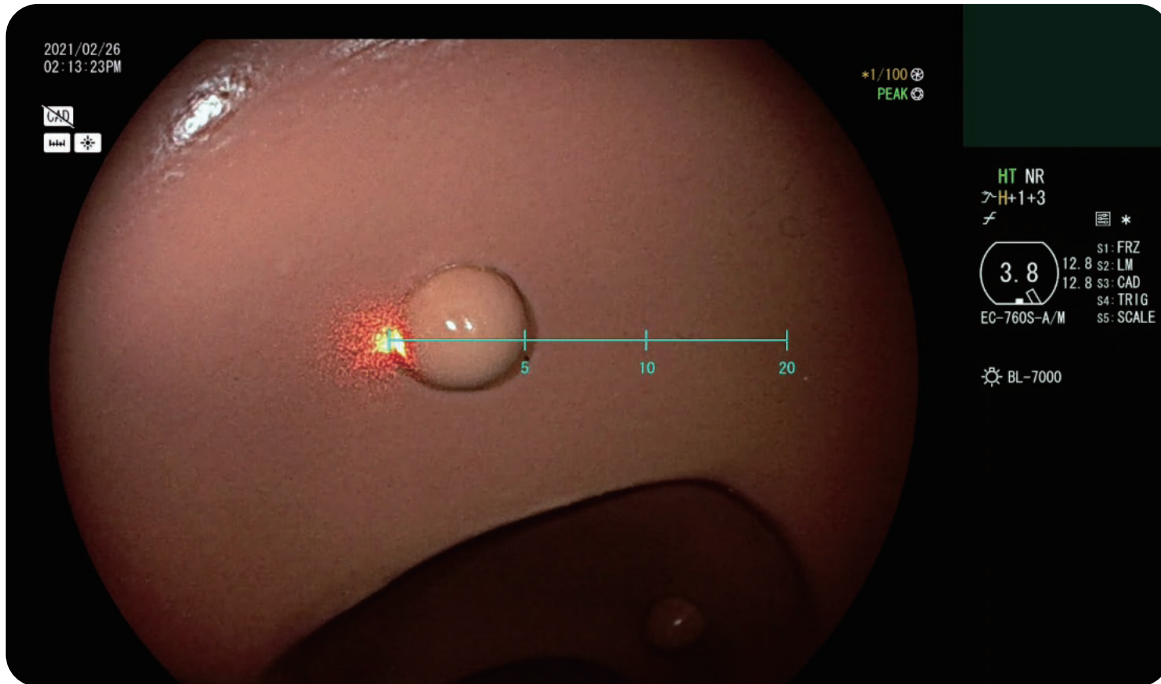


*1 Software to display the virtual scale

- The software detects the position of the laser spot in the endoscopic image and displays the virtual scale on the right side.
- To compare the size of an object with the virtual scale, position the laser spot on the left edge of the object.

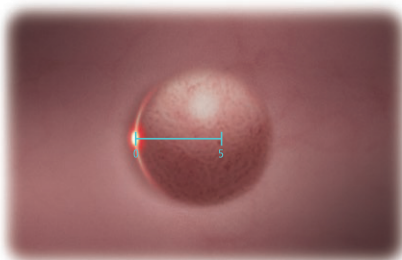


Simple User Interface

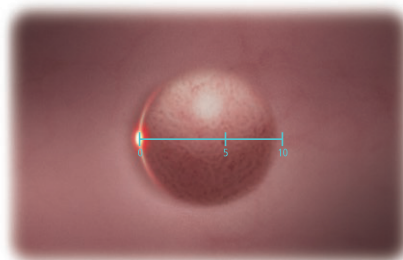


Various scale patterns

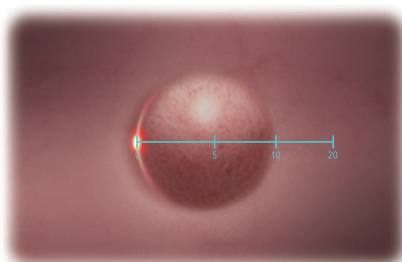
5 different scales are available according to the user preference



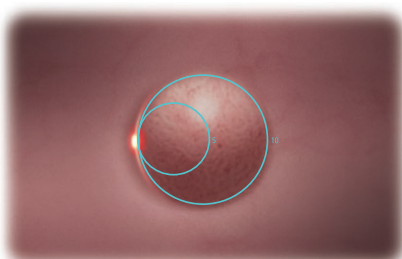
Line 5mm



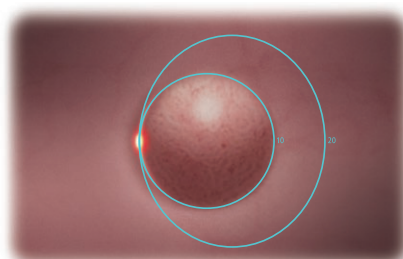
Line 5-10mm



Line 5-10-20mm



Circle 5-10mm



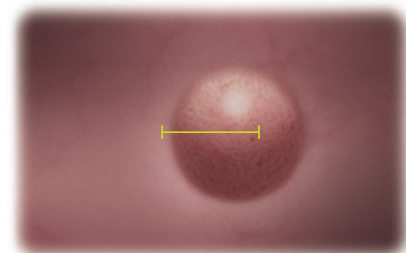
Circle 10-20mm

Error display

If the virtual scale has an error, it will show a yellow graphic display.

An error may occur under the following circumstances:

- When the object is out of the effective range
- When the software cannot detect the laser



Line Error display



Circle Error display

Specifications

SCALE EYE requires the following products.

Video Endoscope EC-760S-A/M, EC-760S-A/L

These endoscope have a laser emitting window on the distal end.

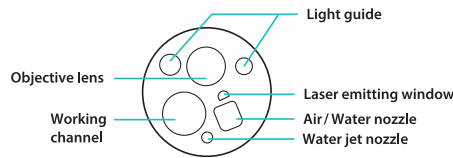
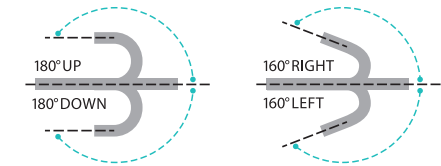
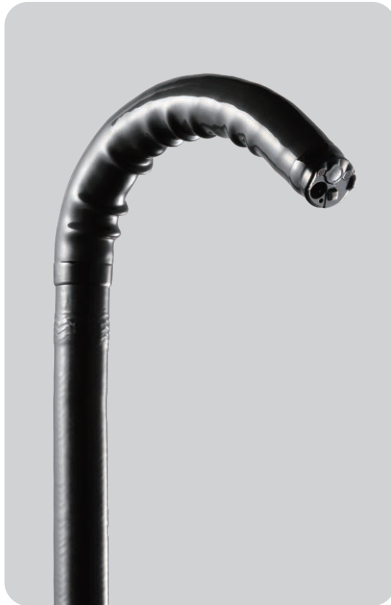


Image area, forceps entry position & water jet position



Special icon for endoscopes designed to be used for SCALE EYE

Field of view	170°
Observation range	2–100 mm
Bending capability	Up 180° / Down 180° Right 160° / Left 160°
Distal end diameter	12.8 mm
Insertion tube diameter	12.8 mm
Working channel diameter	3.8 mm
Working length	M / L 1,330 / 1,690 mm
Total length	M / L 1,650 / 2,010 mm
SCALE EYE (Virtual Scale)	Compatible

GMDN
Code : 36117
Name : Flexible video colonoscope, reusable

Software EW10-VM01

SCALE EYE (Virtual Scale)

GMDN
Code : 64793
Name : Endoscopic video image reference scale software

Expansion Unit EX-1 (Recommended Personal Computer)

Compatible processors	VP-7000
Compatible software	CAD EYE(EW10-EC02), SCALE EYE (EW10-VM01)
Output	DVI-H×1, DVI-D×1
Input	DVI-H×1
Power rating	100-240 VAC +/- 10%, 50/60 Hz 1.25 to 0.60A
Dimensions(W×H×D)	370.0 × 99.0 × 465.6 mm
Weight	7.1 kg



FUJIFILM

FUJIFILM Corporation

26-30-NISHIAZABU 2-CHOME, MINATOKU, TOKYO 106-8620, JAPAN
<http://www.fujifilm.com>